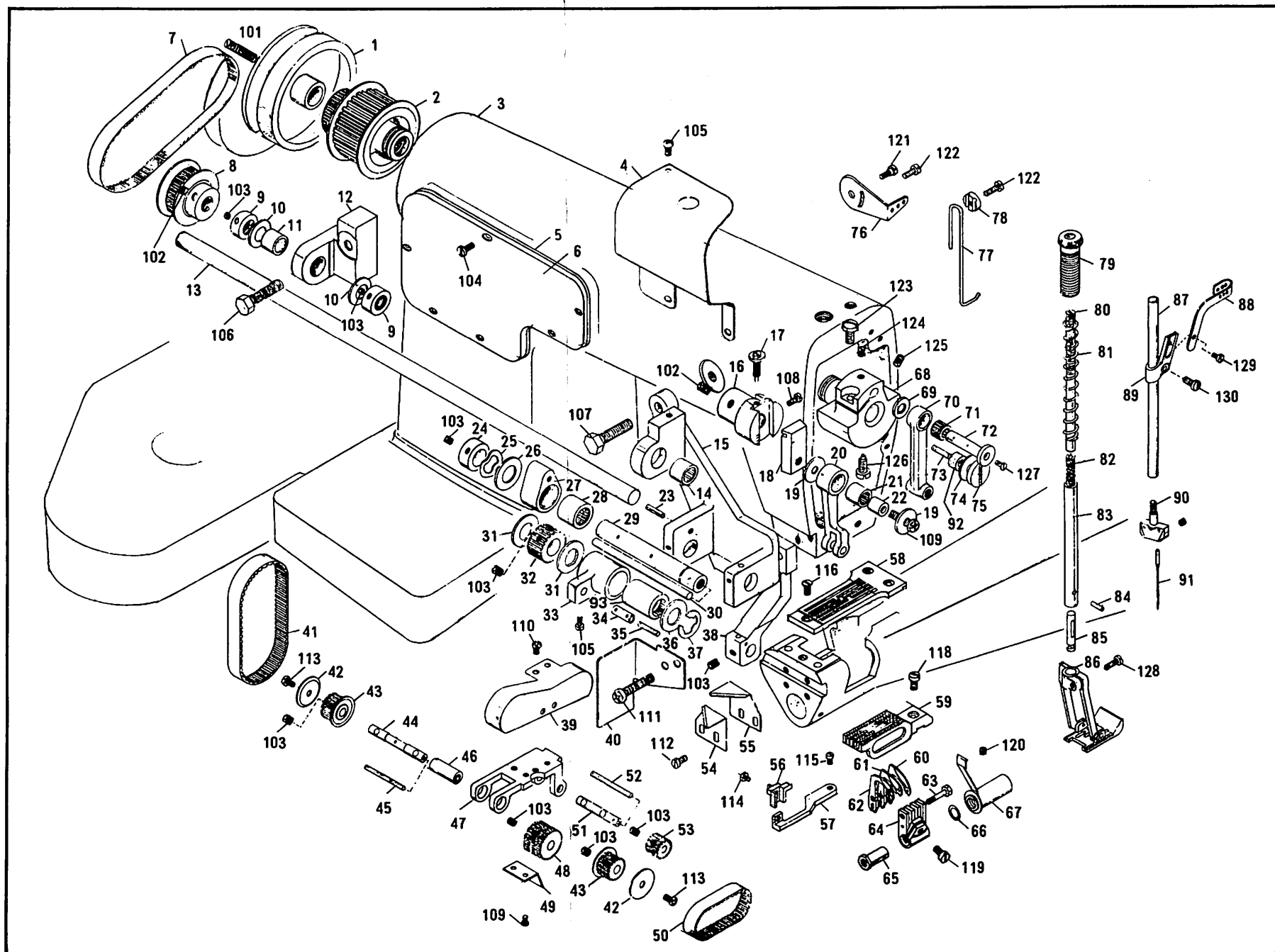


TOYOTA MODEL AL254



PART NO.	PART NAME	PART NO.	PART NAME	PART NO.	PART NAME
1	HAND WHEEL	43	TIMING GEAR (D)	85	PRESSER BAR INNER
2	TIMING GEAR (A) ASSEMBLY	44	HINGE SHAFT FOR 46	86	HINGED FOOT
3	ARM BED ASSEMBLY	45	OIL FELT FOR 44	87	NEEDLE BAR ONLY
4	COVER PLATE FOR 15	46	ADJUSTING BUSHING FOR 47	88	TOP UP LEVER
5	GASKET FOR 6	47	ROLLER HOLDER	89	TAKE UP LEVER HOLDER
6	BACK COVER PLATE	48	FEED ROLLER	90	NEEDLE CLAMP BODY (1/4")
7	TIMING BELT (A)	49	ROLLER COVER (B)	91	NEEDLES (#21)
8	TIMING GEAR (B)	50	TIMING BELT (C)	92	TOP SHAFT OIL FELT OUTER
9	COLLAR FOR 13	51	ROLLER SHAFT	93	ONE WAY CLUTCH FRONT
10	FLAT WASHER FOR 13	52	OIL FELT FOR 51		
11	BEARING FOR 13	53	TIMING GEAR (E)	101	SET SCREW FOR 1
12	HOLDER REAR FOR 13	54	THREAD CUTTER (A)	102	SET SCREW FOR 8 & 16
13	ROLLER CLUTCH UPPER SHAFT	55	THREAD CUTTER (B)	103	SET SCREW FOR 9
14	BEARING FOR 13	56	NEEDLE GUARD	104	SET SCREW FOR 6
15	HOLDER FRONT FOR 13	57	NEEDLE GUARD HOLDER	105	SET SCREW FOR 4
16	ROLLER FEED CAM	58	NEEDLE PLATE 3P (1/4")	106	SET BOLT FOR 12
17	ADJUSTING SCREW FOR 18	59	FEED DOG (1/4")	107	SET BOLT FOR 15
18	ROLLER FEED ECCENTRIC	60	LOOPER (A)	108	SET SCREW FOR 18
19	BEARING GUIDE WASHER	61	LOOPER (M)	109	SET SCREW FOR 20
20	CRANK ROD	62	LOOPER (B)	110	SET SCREW FOR 39
21	BEARING FOR 20	63	SET SCREW FOR 60, 61, 62	111	SET SCREW FOR 38 & 40
22	BEARING INNER	64	LOOPER HOLDER	112	SET SCREW FOR 54 & 55
23	SPRING PIN FOR 27	65	BUSHING FOR LOOPER HOLDER	113	SET SCREW FOR 42
24	COLLAR FOR 29	66	OIL STOPPER RING	114	SET SCREW FOR 56
25	WAVE WASHER FOR 27	67	LOOPER BUSHING & NEEDLE GUARD	115	SET SCREW FOR 57
26	FLAT WASHER FOR 27	68	TAKE UP LEVER CRANK	116	SET SCREW FOR 58
27	CLUTCH HOLDER FOR 28	69	WASHER FOR 72		
28	ONE WAY CLUTCH REAR	70	NEEDLE BAR CRANK ROD	118	SET SCREW FOR 59
29	ROLLER CLUTCH LOWER SHAFT	71	NEEDLE BEARING COMPLETE	119	SET SCREW FOR 64
30	OIL FELT FOR 29	72	NEEDLE BAR CRANK PIN	120	SET SCREW FOR 67
31	FLAT WASHER FOR 32	73	TOP SHAFT OIL FELT INNER	121	HINGE SCREW FOR 76
32	TIMING GEAR (C)	74	PACKING FOR 75	122	SET SCREW FOR 76 & 78
33	CLUTCH HOLDER FOR 93	75	SCREW, TOP SHAFT OIL CAP	123	SET SCREW FOR 72
34	HINGE PIN FOR 20	76	THREAD EYELET	124	SET SCREW FOR 72
35	OIL FELT FOR 34	77	THREAD GUIDE UPPER	125	SET SCREW FOR 68
36	FLAT WASHER FOR 93	78	THREAD GUIDE UPPER CLAMP	126	SET SCREW FOR 68
37	STOP RING FOR 93	79	PRESSER FOOT REGULATOR SCREW	127	OIL STOPPER SCREW FOR 72
38	ROLLER HOLDER ARM	80	PRESSER ROLLER REGULATOR SCREW	128	SET SCREW FOR 86
39	ROLLER COVER (A)	81	PRESSER SPRING OUTER	129	SET SCREW FOR 88
40	BELT COVER FOR 41	82	PRESSER SPRING INNER	130	SET SCREW FOR 89
41	TIMING BELT (B)	83	PRESSER BAR OUTER		
42	GUIDE PLATE FOR 41	84	PIN FOR 85		